

From  
biowaste  
to soil  
regeneration



# Why do we need to act?

**30%**

of Municipal waste  
is biowaste

**80%**

of the biowaste is  
landfilled or  
incinerated



These are  
precious  
resources..

..that can be  
turned into very  
much needed soil  
improvers

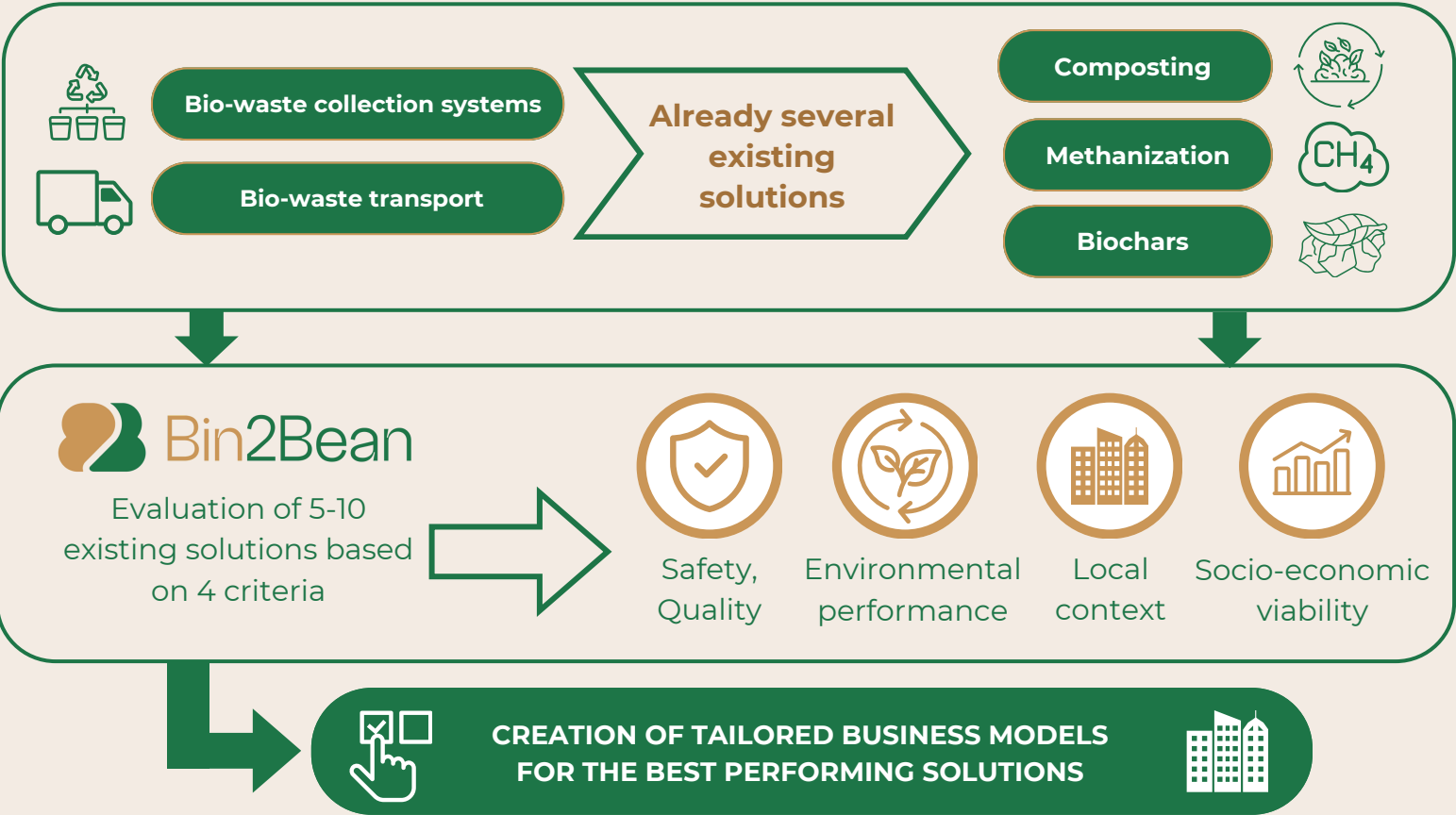
**65%**

of European soils  
are unhealthy

**17%**

of biowaste is  
recycled and just a  
fraction used to  
improve soils

# The approach of the Bin2Bean project: defining the best solutions for your city



## In practice..



- 1.** Local stakeholders will identify the best replicable solutions in terms of biowaste collection and soil improvers production
- 2.** Partners will test methods to demonstrate the safety of soil improvers, and indicators for soil quality
- 3.** Issue of guidelines for policymakers to improve biowaste collection and favor the adoption of soil improvers

# Take part in Bin2Bean

Supporting  
European Cities by  
promoting effective  
circular solutions

3 Living labs:



AMSTERDAM (NL)

EGALEO (EL)

HAMBURG (DE)

## Project partners



Consorzio  
Italbiotec



STADTREINIGUNG.HAMBURG



SHAPING THE  
CIRCULAR ECONOMY



A WARRANT HUB COMPANY



RUOKAVIRASTO  
Livsmedelverket • Finnish Food Authority



NACHHALTIGKEITSBERATUNG  
DR. FRIEGE & PARTNER

etaflorencia  
renewableenergies

Get in touch!



[bin2bean.eu](https://bin2bean.eu)



[info@bin2bean.eu](mailto:info@bin2bean.eu)



Bin2Bean



Co-funded by  
the European Union

Views and opinions expressed are however those of the author(s) only and do not necessarily reflect those of the European Union or REA. Neither the European Union nor the granting authority can be held responsible for them